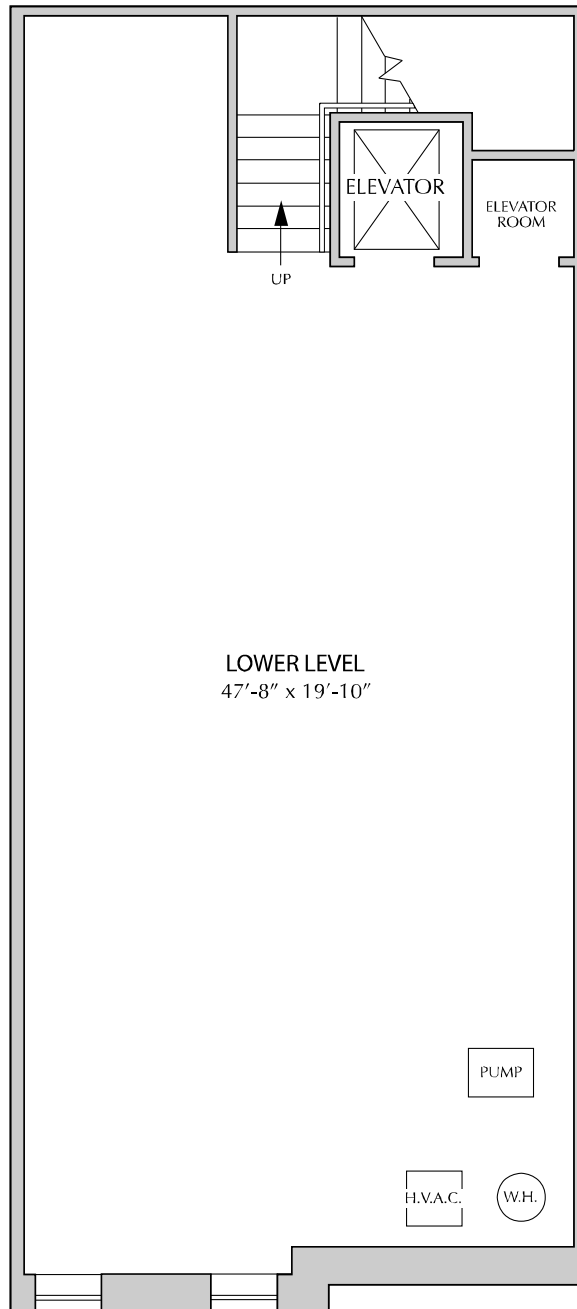


# 20 Paul Robeson Place

## Lower Level

3 Bedrooms  
3.5 Baths  
3,787 Square Feet



THE RESIDENCES AT

# PALMER SQUARE

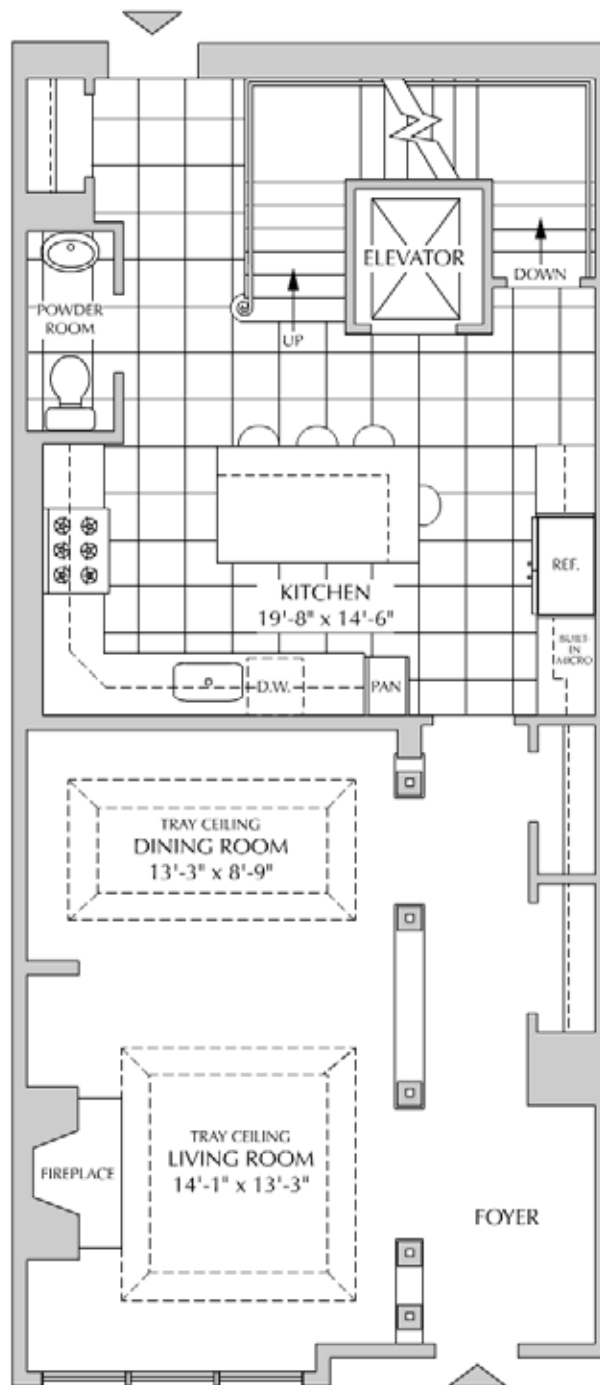


All dimensions and square footages are approximate and are subject to change without notice. Floorplans are for illustrative purposes only and may not, as such, reflect the actual layout and features of any given home. Features, components and materials may be substituted with those of similar quality.

# 20 Paul Robeson Place

## First Floor

3 Bedrooms  
3.5 Baths  
3,787 Square Feet



THE RESIDENCES AT

# PALMER SQUARE

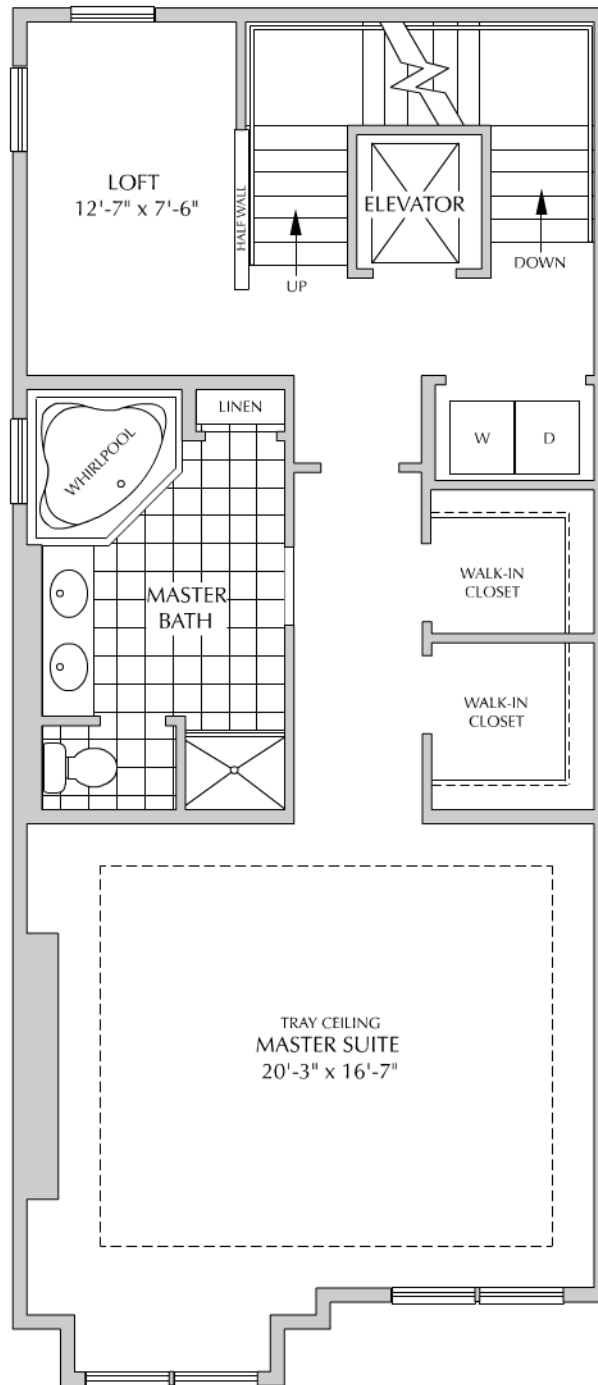


All dimensions and square footages are approximate and are subject to change without notice. Floorplans are for illustrative purposes only and may not, as such, reflect the actual layout and features of any given home. Features, components and materials may be substituted with those of similar quality.

# 20 Paul Robeson Place

## Second Floor

3 Bedrooms  
3.5 Baths  
3,787 Square Feet



THE RESIDENCES AT

# PALMER SQUARE

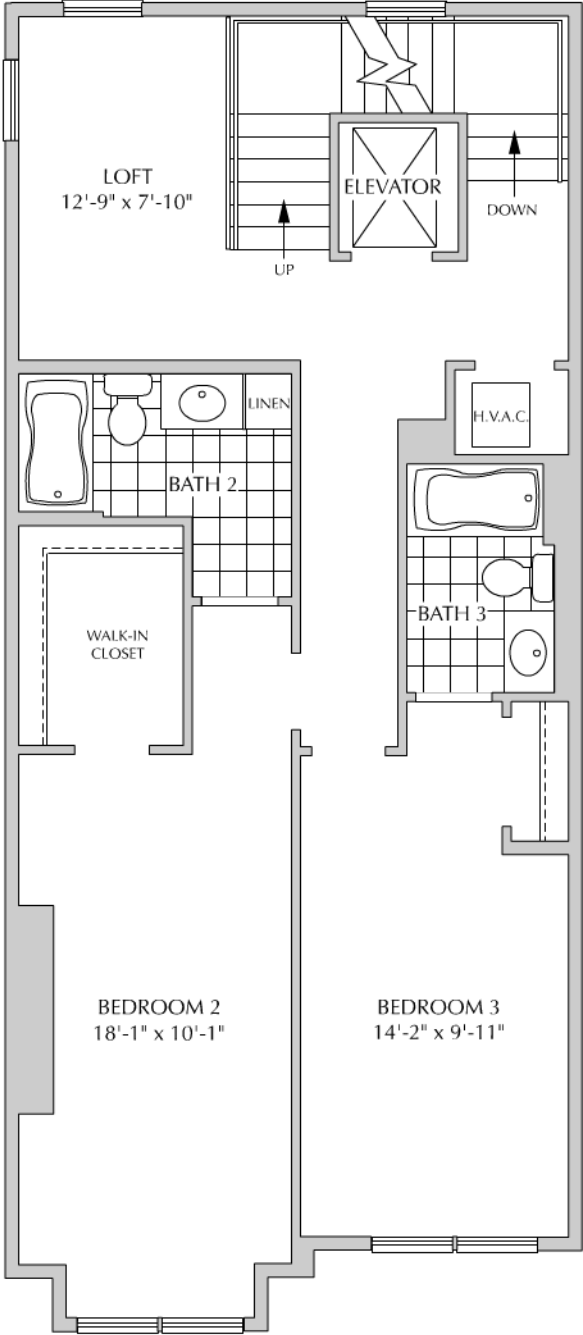


All dimensions and square footages are approximate and are subject to change without notice. Floorplans are for illustrative purposes only and may not, as such, reflect the actual layout and features of any given home. Features, components and materials may be substituted with those of similar quality.

# 20 Paul Robeson Place

## Third Floor

3 Bedrooms  
3.5 Baths  
3,787 Square Feet



THE RESIDENCES AT

# PALMER SQUARE

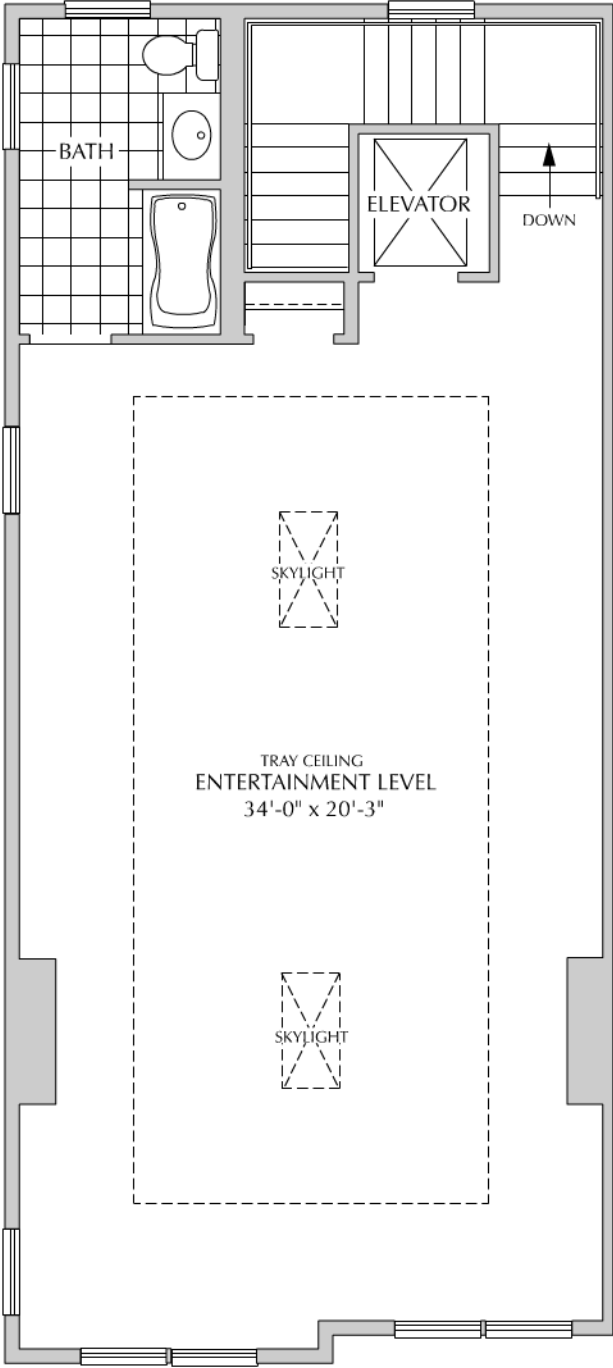


All dimensions and square footages are approximate and are subject to change without notice. Floorplans are for illustrative purposes only and may not, as such, reflect the actual layout and features of any given home. Features, components and materials may be substituted with those of similar quality.

# 20 Paul Robeson Place

## Fourth Floor

3 Bedrooms  
3.5 Baths  
3,787 Square Feet



THE RESIDENCES AT

# PALMER SQUARE



All dimensions and square footages are approximate and are subject to change without notice. Floorplans are for illustrative purposes only and may not, as such, reflect the actual layout and features of any given home. Features, components and materials may be substituted with those of similar quality.